

Michael-John Devlin – University College London

Heavily Pre-Treated Ovarian Cancer of Mixed Pathology in the Early Phase Setting

History

Diagnosis
May
2011

TAH, BSO and
omentectomy

Stage 1c Mixed
high grade
endometrioid /
clear cell

6 cycles of
adjuvant
paclitaxel and
carboplatin

Relapse
December
2013

Large nodal and
peritoneal disease
with liver
metastases

Commenced
gemcitabine,
carboplatin and
bevacizumab x3
with PD

Progressed
March
2014

Cisplatin and
etoposide x 6
weeks followed by
etoposide x 4

65 years old with high grade mixed endometrioid / clear cell carcinoma

Heavily pre-treated with platinum resistant disease

Liver, peritoneal and nodal metastases

Progressed
December
2014

Letrozole

Progressed
June
2015

Weekly Paclitaxel x
16 weeks

Progressed
November
2015

Referred to Early
Phase Clinical Trial
Unit

- ◉ Past Medical History
 - Deaf
 - Hypertension
 - Portacath Thrombus

- ◉ Baseline Symptoms
 - PS0
 - Grade 1 pain in left groin

- ◉ Other
 - BRCA1 variant of uncertain significance
 - NGS: KRAS p.(Gln61Arg), c.182A>G (84%)
 - CA125 non-secretor

- ◉ Management Plan
 - Phase I trial of AKT inhibitor and PARP inhibitor

Treatment

Cycle 1
December
2015

Commenced
Phase I Study

Cycle 2
February
2016

Stable Disease
(27% RECIST)

Cycle 6
June
2016

Partial Response
(56% RECIST)

Cycle 11
September
2016

Dose Reduction of
AKT inhibitor due
to toxicity

Cycle 21
February
2017

Ongoing Response
(79% RECIST)

April 2017

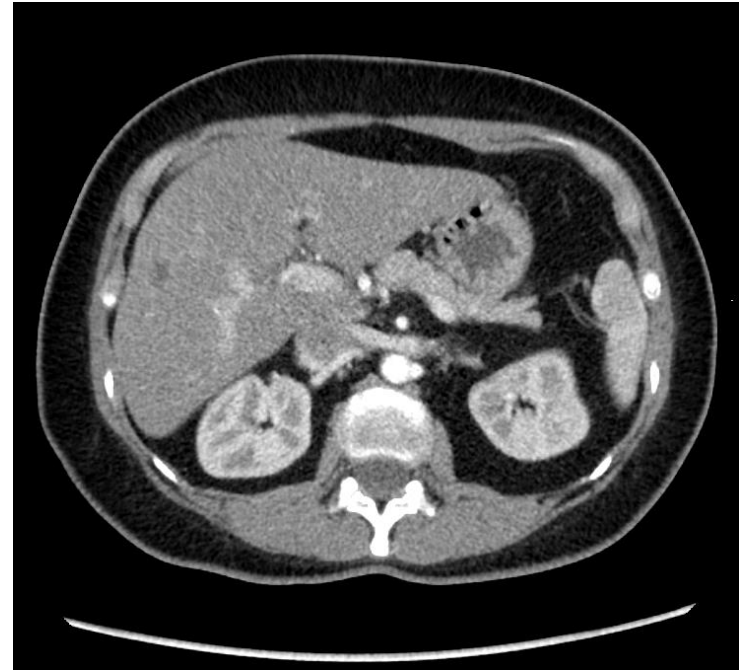
Continues on
study

Grade 1 Fatigue

Excellent QOL



December 2015 (Baseline)



November 2016