



GOOD SCIENCE  
BETTER MEDICINE  
BEST PRACTICE

[www.esmo.org](http://www.esmo.org)

European Society for Medical Oncology

**What is personalized  
treatment in cancer care?**

**S Tejpar**

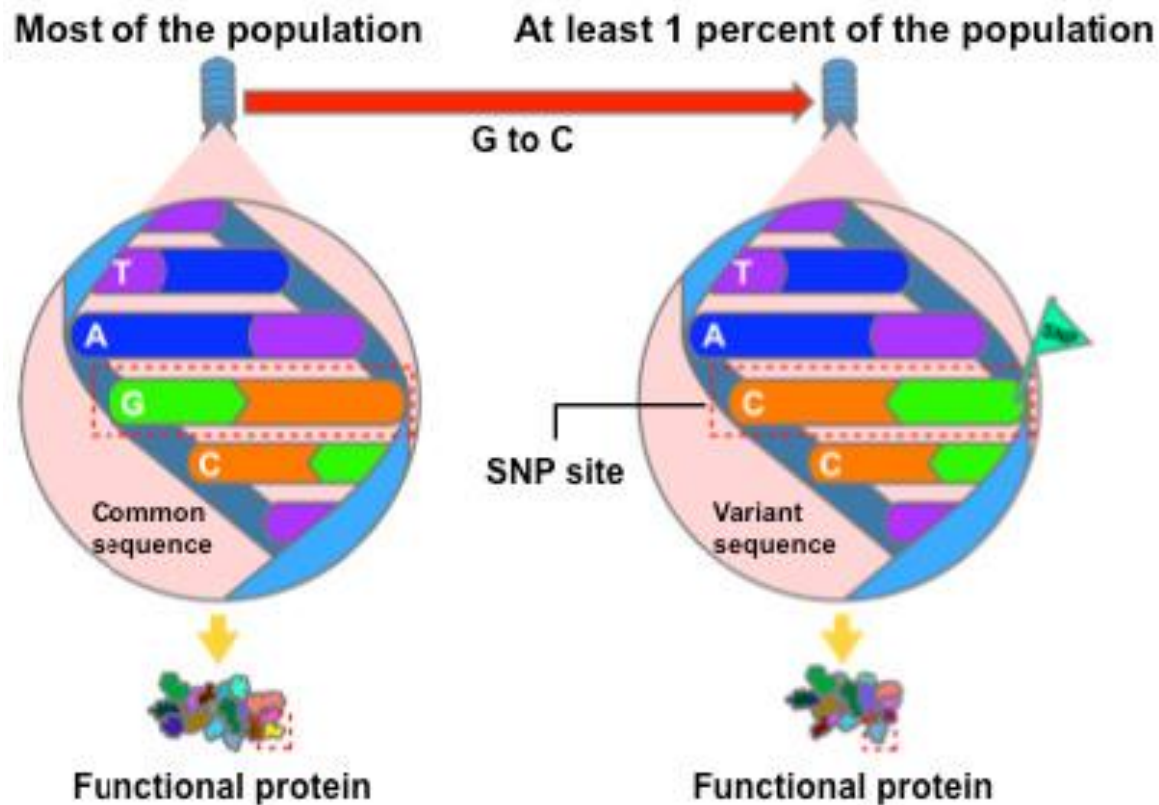
# Treatment is chosen based on characteristics of the individual and the disease

Tumor

Germline



# SNP's or Single Nucleotide Polymorphisms



- Host

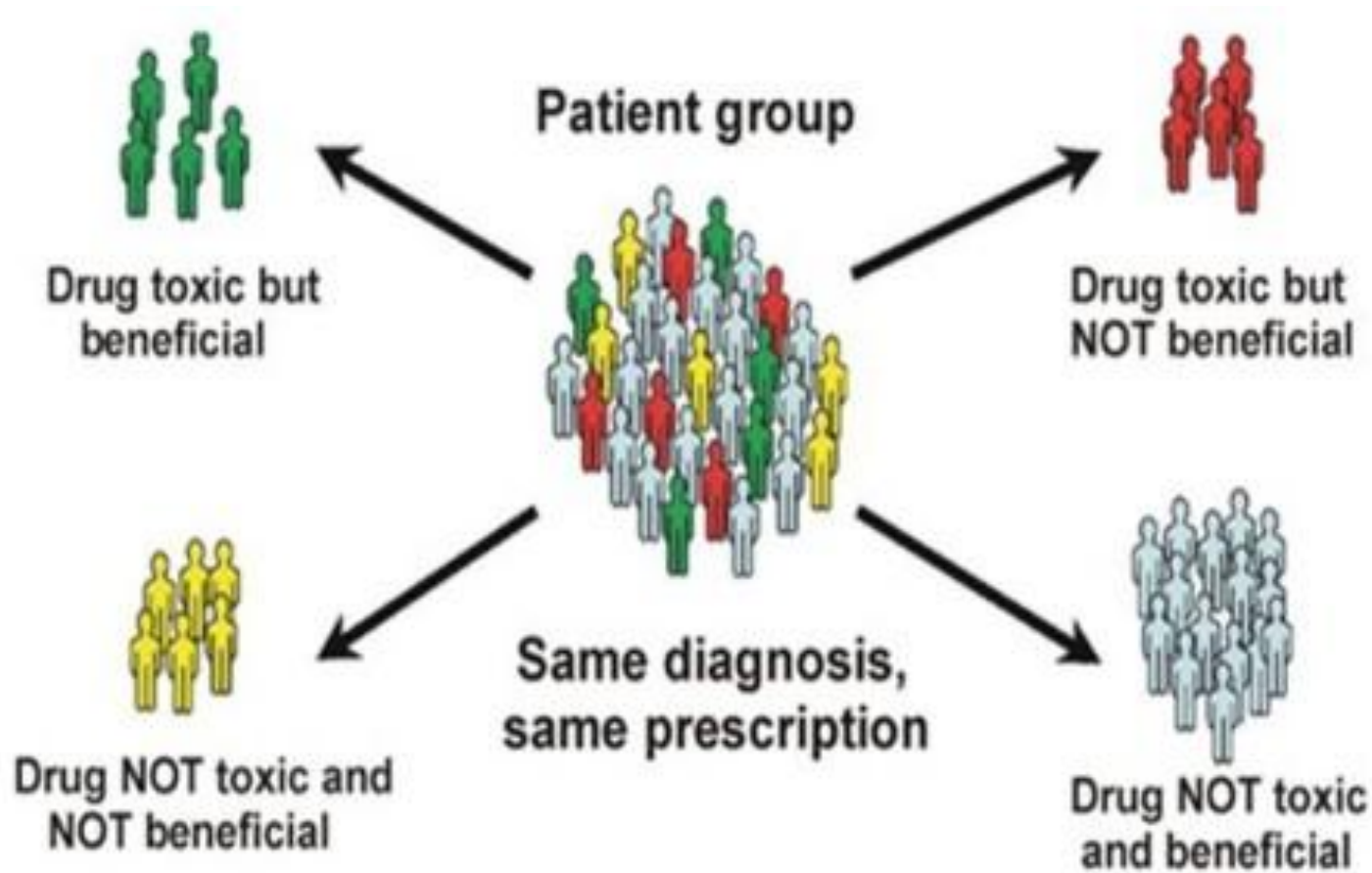


# Germline: Pharmacogenomics



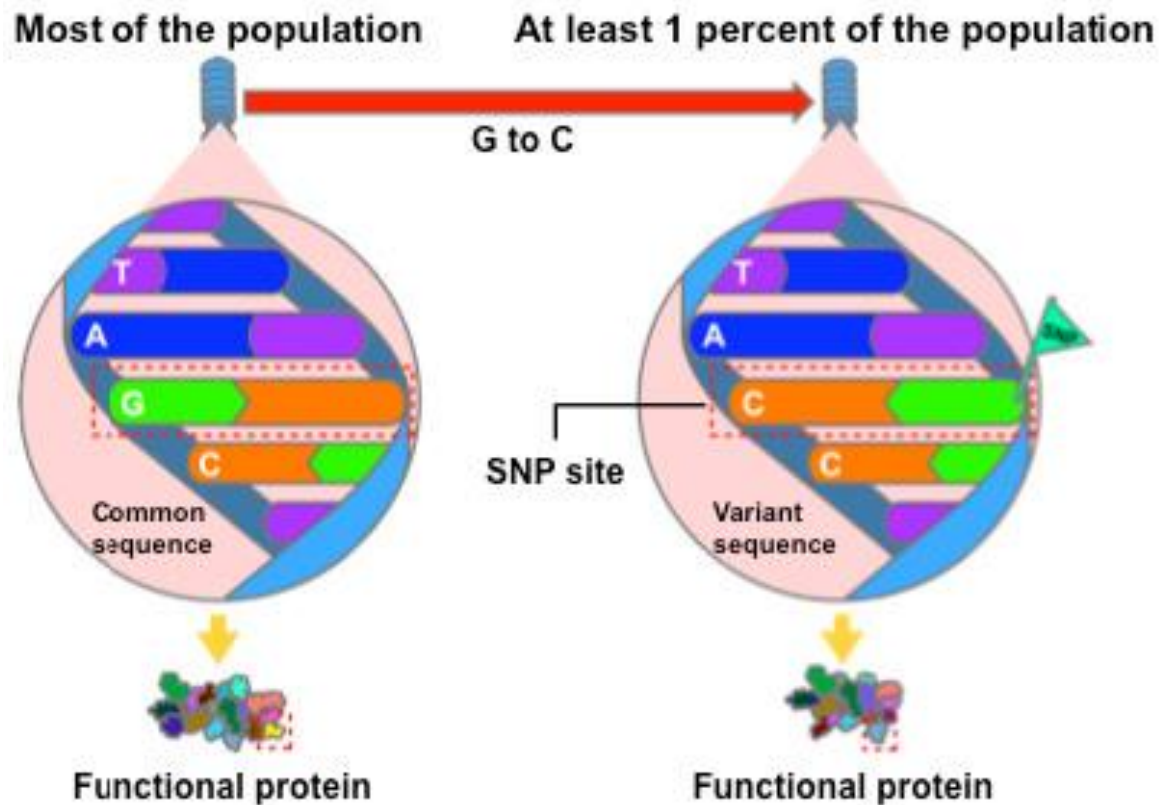
- How do host germline factors influence outcome of drug treatment?
- Variations in the way drugs are metabolized

# Germline: Pharmacogenomics



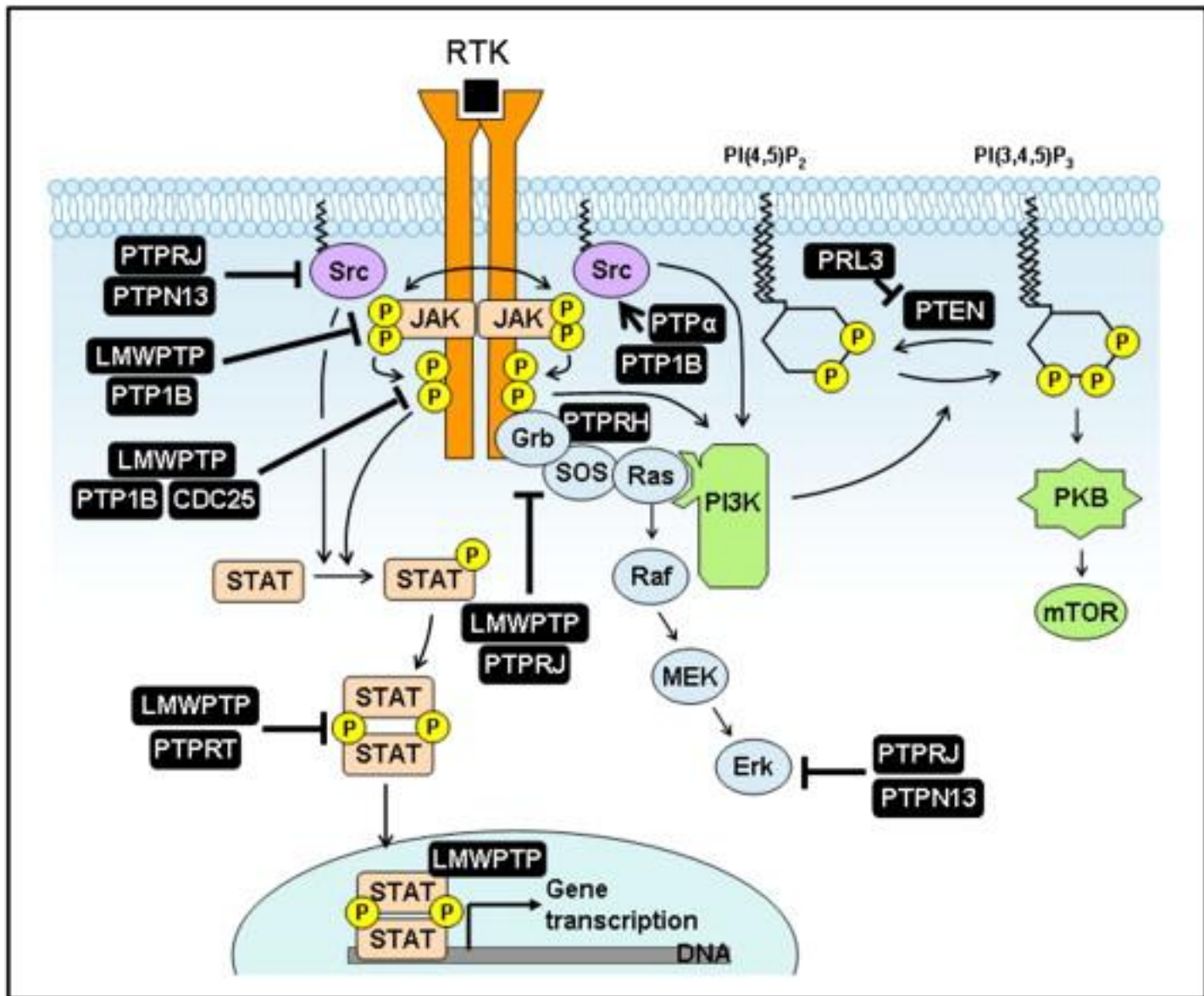


# SNP's or Single Nucleotide Polymorphisms



- Host impact on tumor





# Treatment is chosen based on characteristics of the individual and the disease

Tumor

Germline





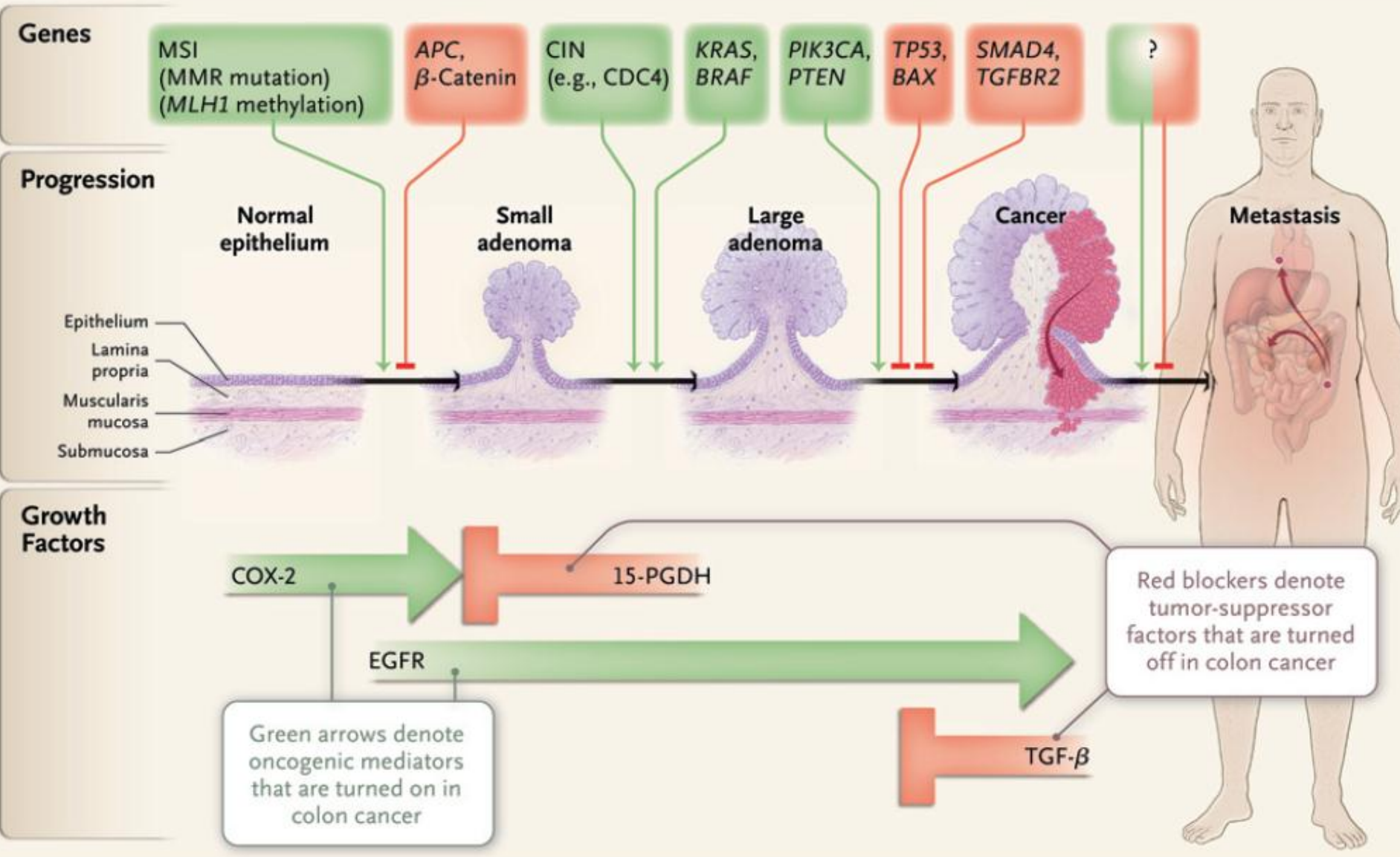
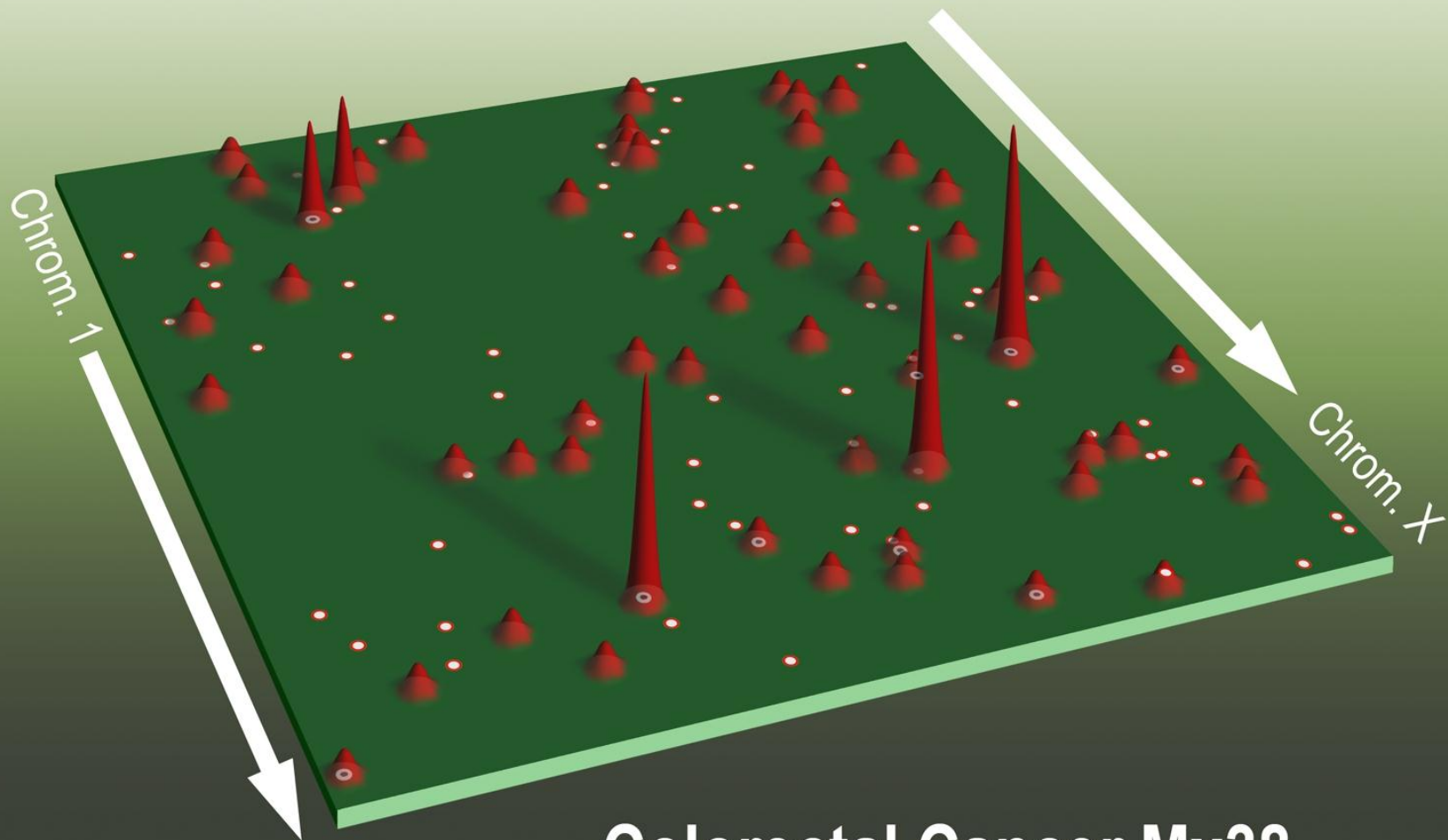
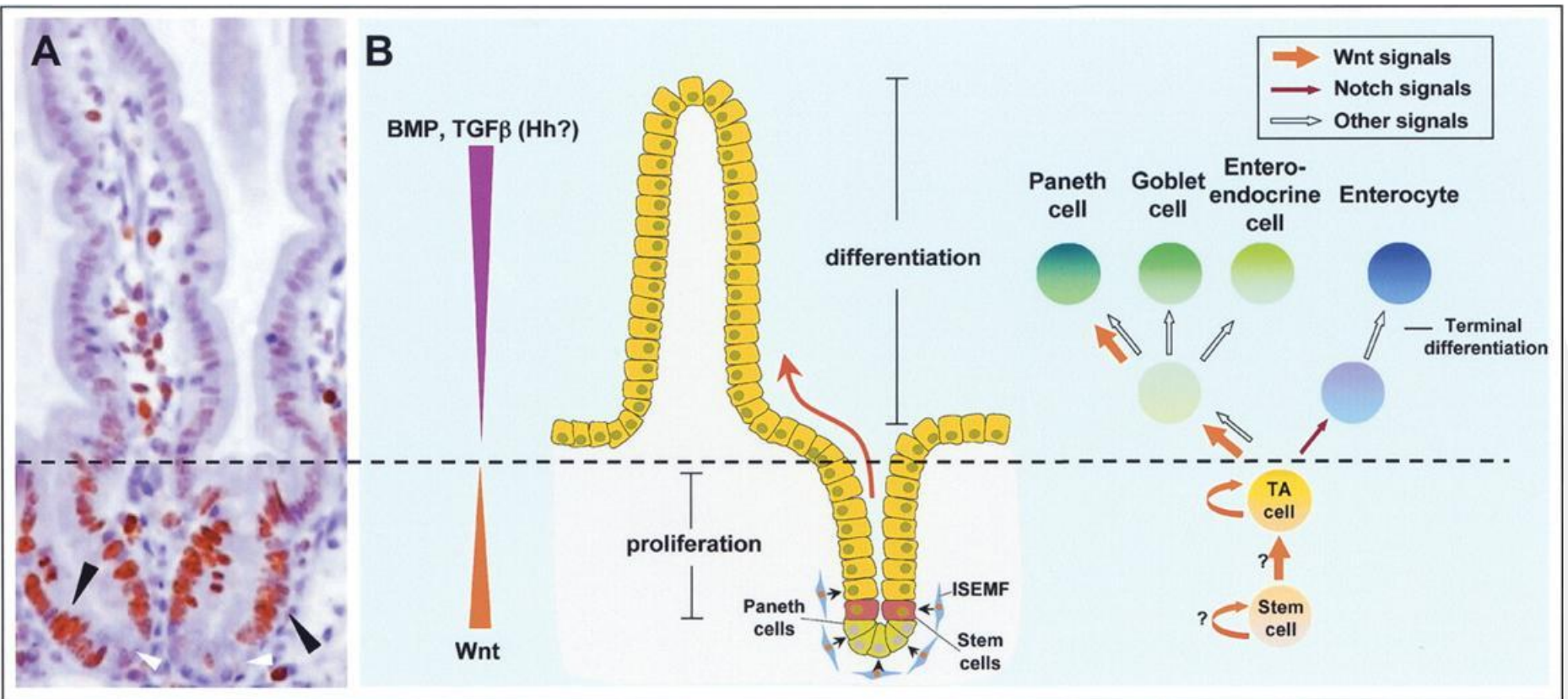


Figure 2. Genes and Growth Factor Pathways That Drive the Progression of Colorectal Cancer.

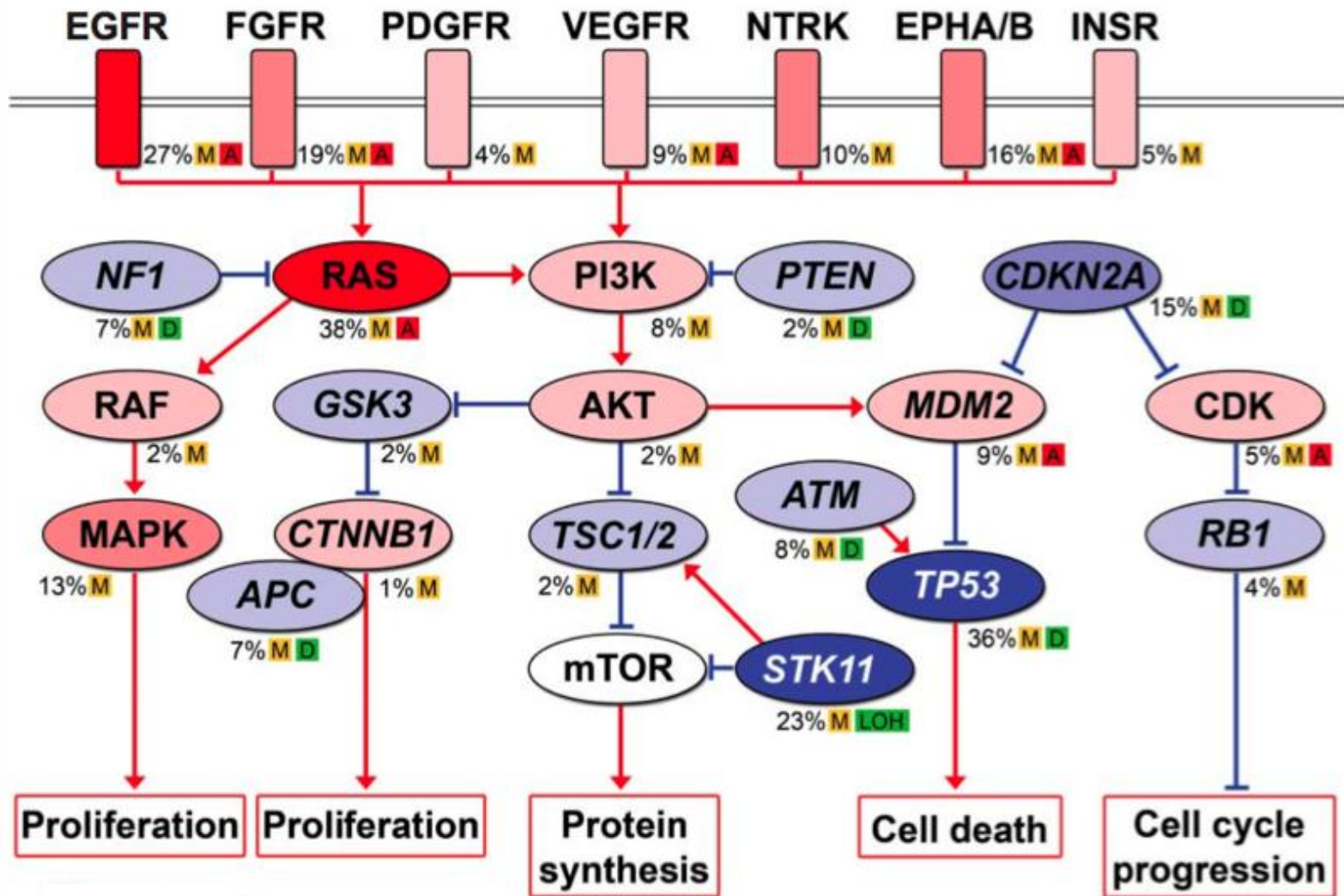


**Colorectal Cancer Mx38**





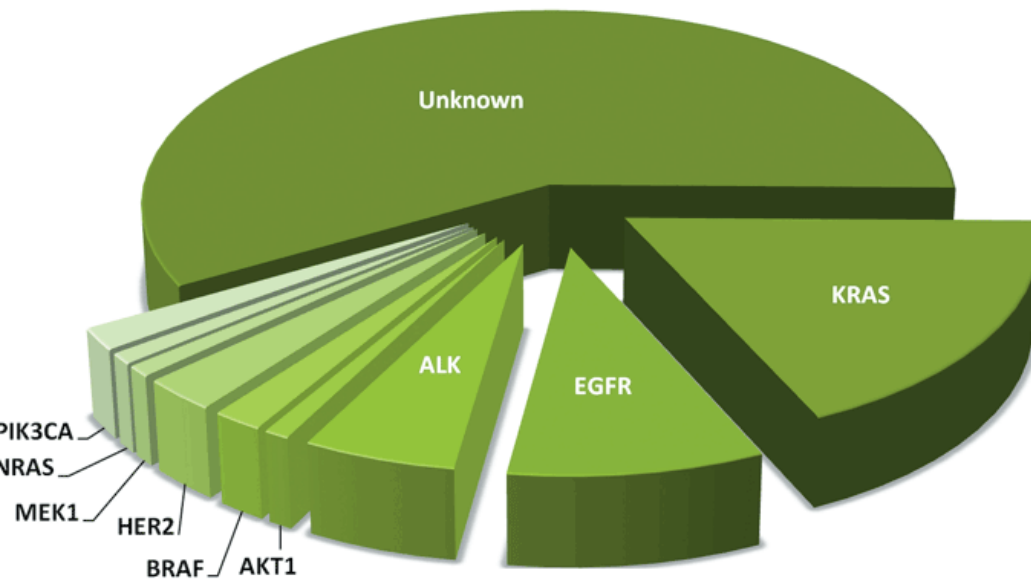
## Many faces to a tumor from a given organ



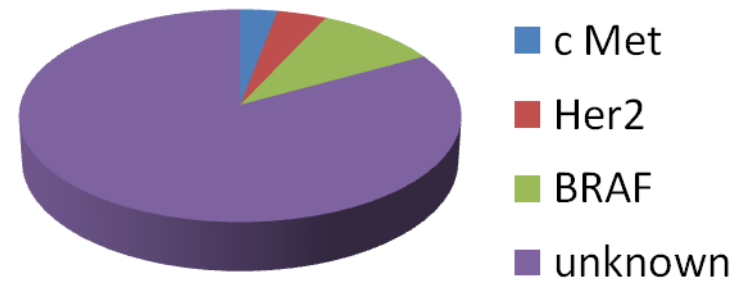
# Oncogenic drivers

MAJOR advances in differentiating tumors for different cancer types

- Lung cancer

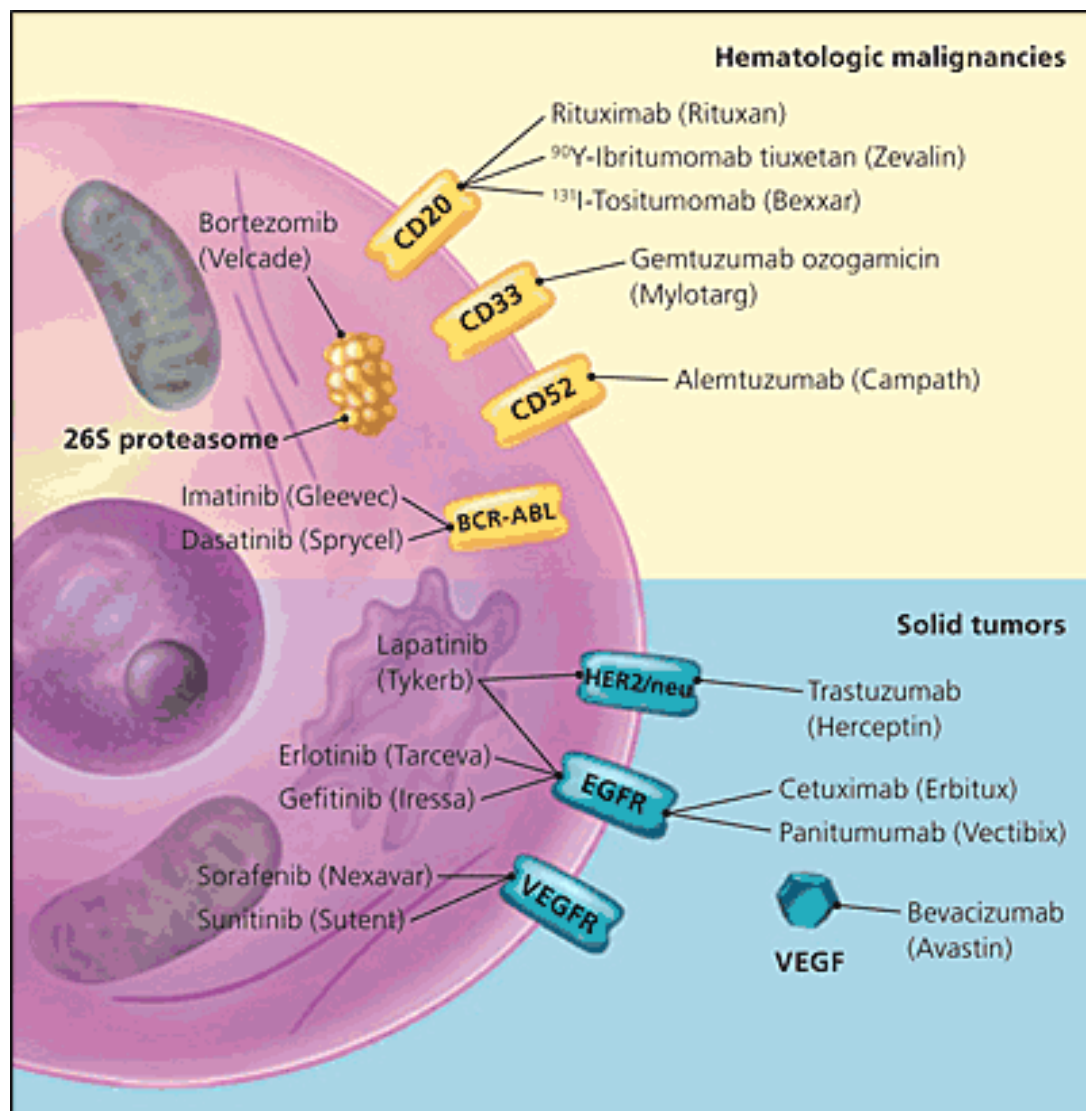


- Colon cancer





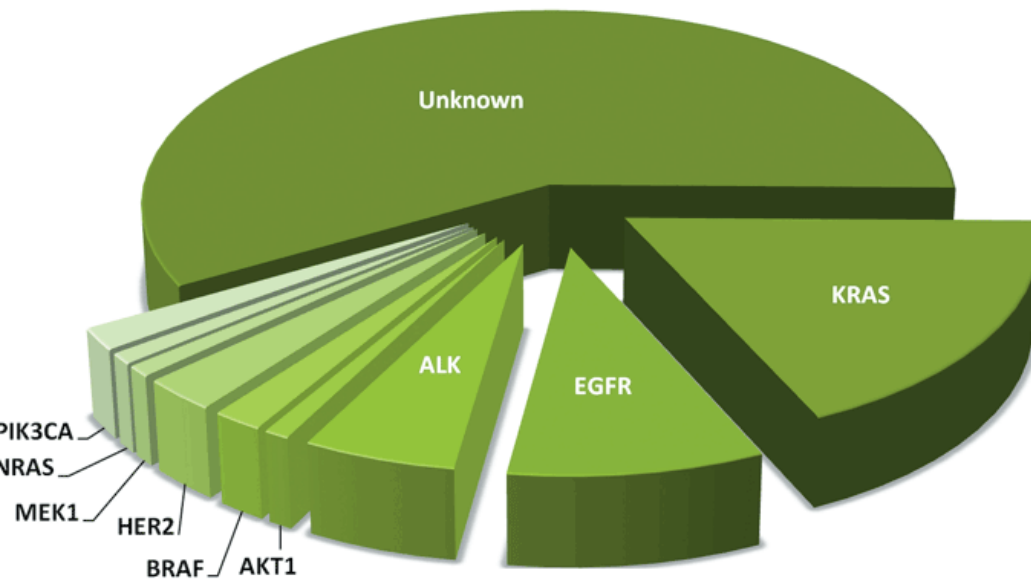
# Targeted therapy



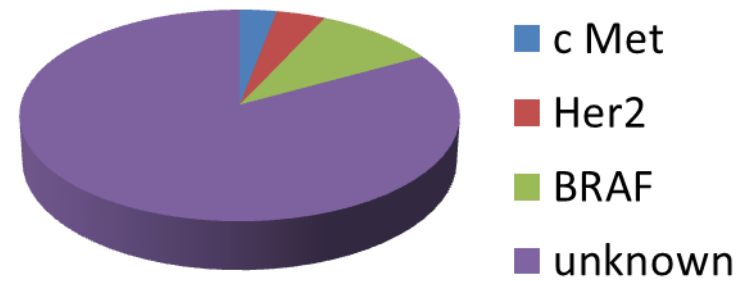
# Oncogenic drivers

MAJOR advances in differentiating tumors for different cancer types

- Lung cancer

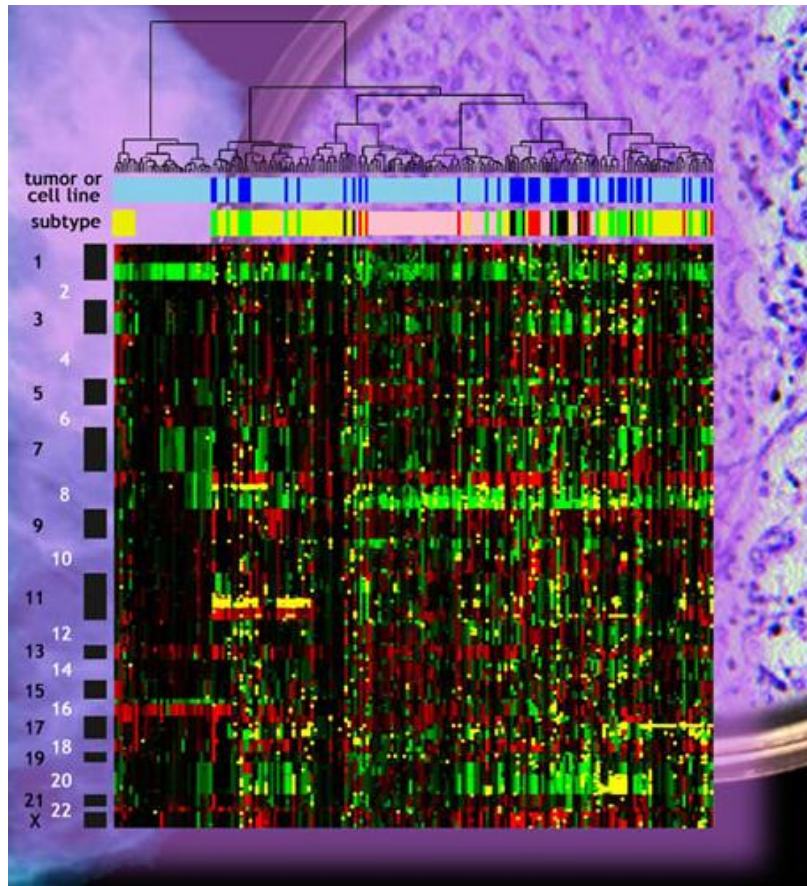


- Colon cancer



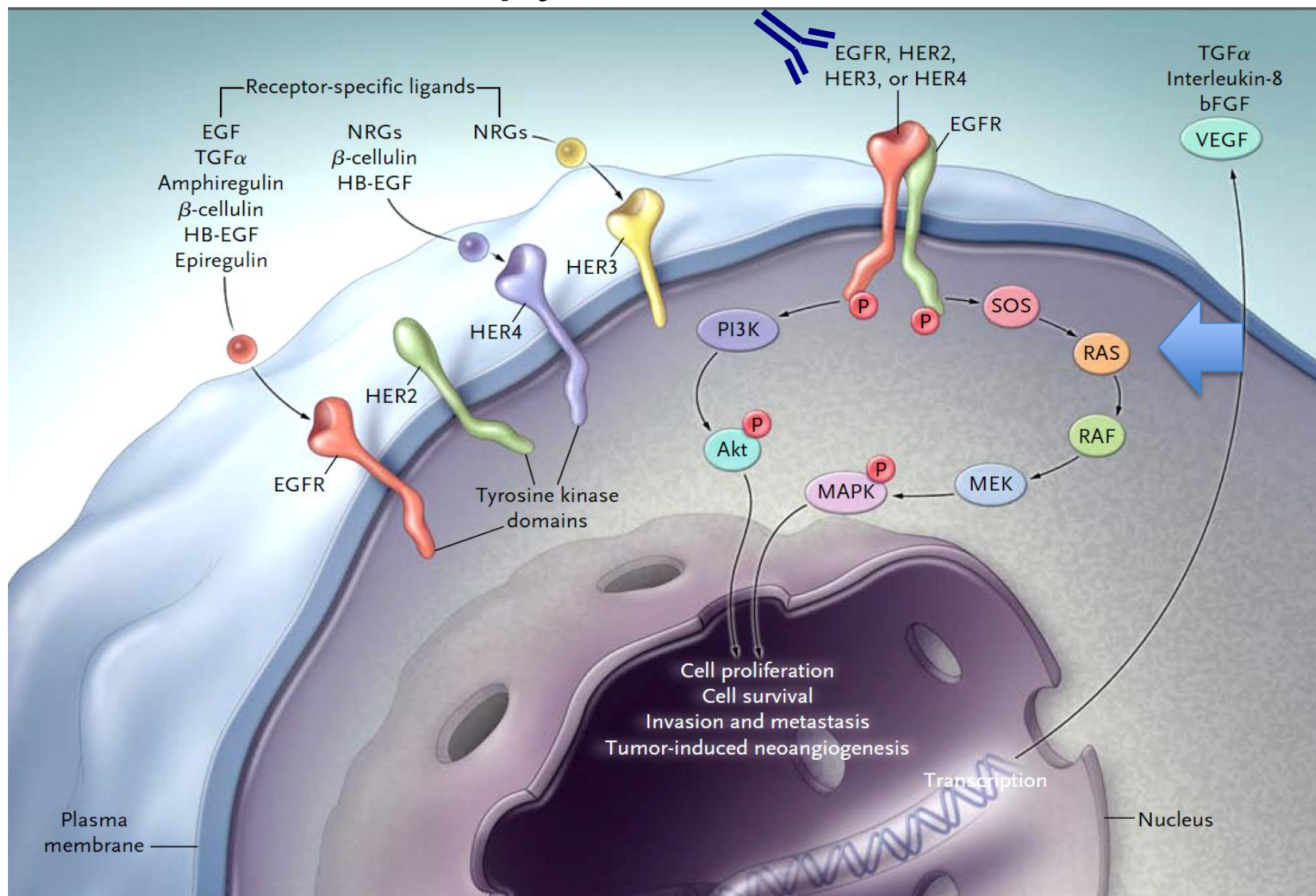
# Subtypes

MAJOR advances in differentiating tumors for different cancer types



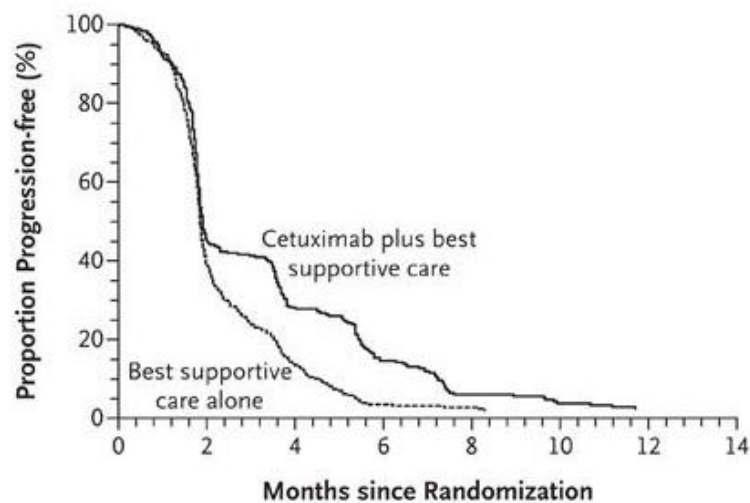
- Breast cancer
  - Lung Cancer
  - Colon cancer
  - Brain tumors
  - ....
- 
- Provide a framework of the disease, match drug efficacy in the different groups

# Anti EGFR therapy and colorectal cancer





B



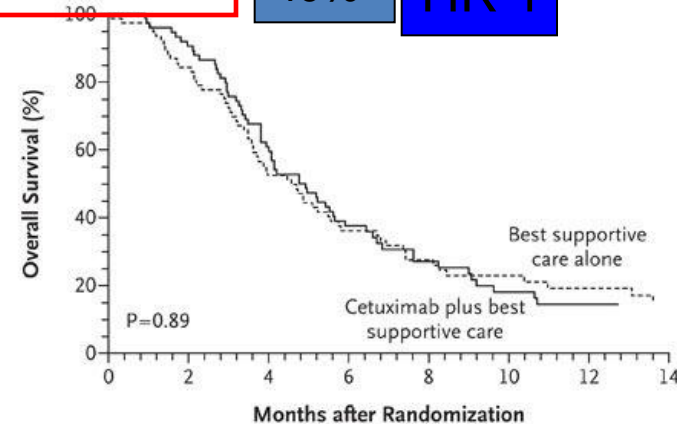
No. at Risk								
Cetuximab plus best supportive care	287	129	78	38	14	8	4	1
Best supportive care alone	285	106	35	9	7	4	3	1

Monotherapy Erbitux Unselected patients  
NEJM 2007

A Mutated *K-ras*

40%

HR 1

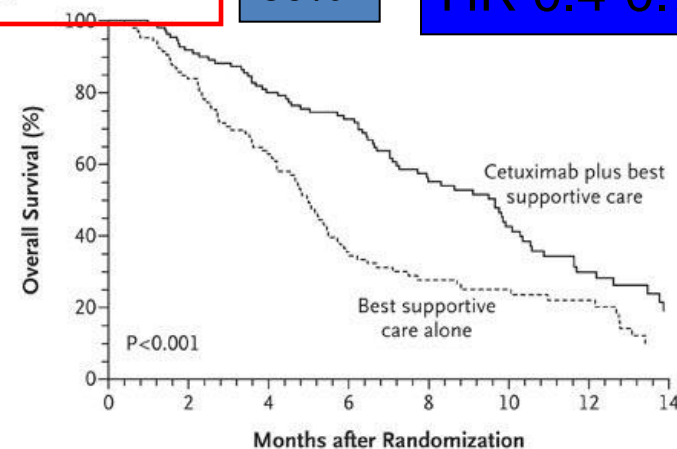


No. at Risk								
Cetuximab plus best supportive care	75	67	45	26	15	10	7	4
Best supportive care alone	76	64	39	26	19	12	10	7

B Wild-type *K-ras*

60%

HR 0.4-0.7

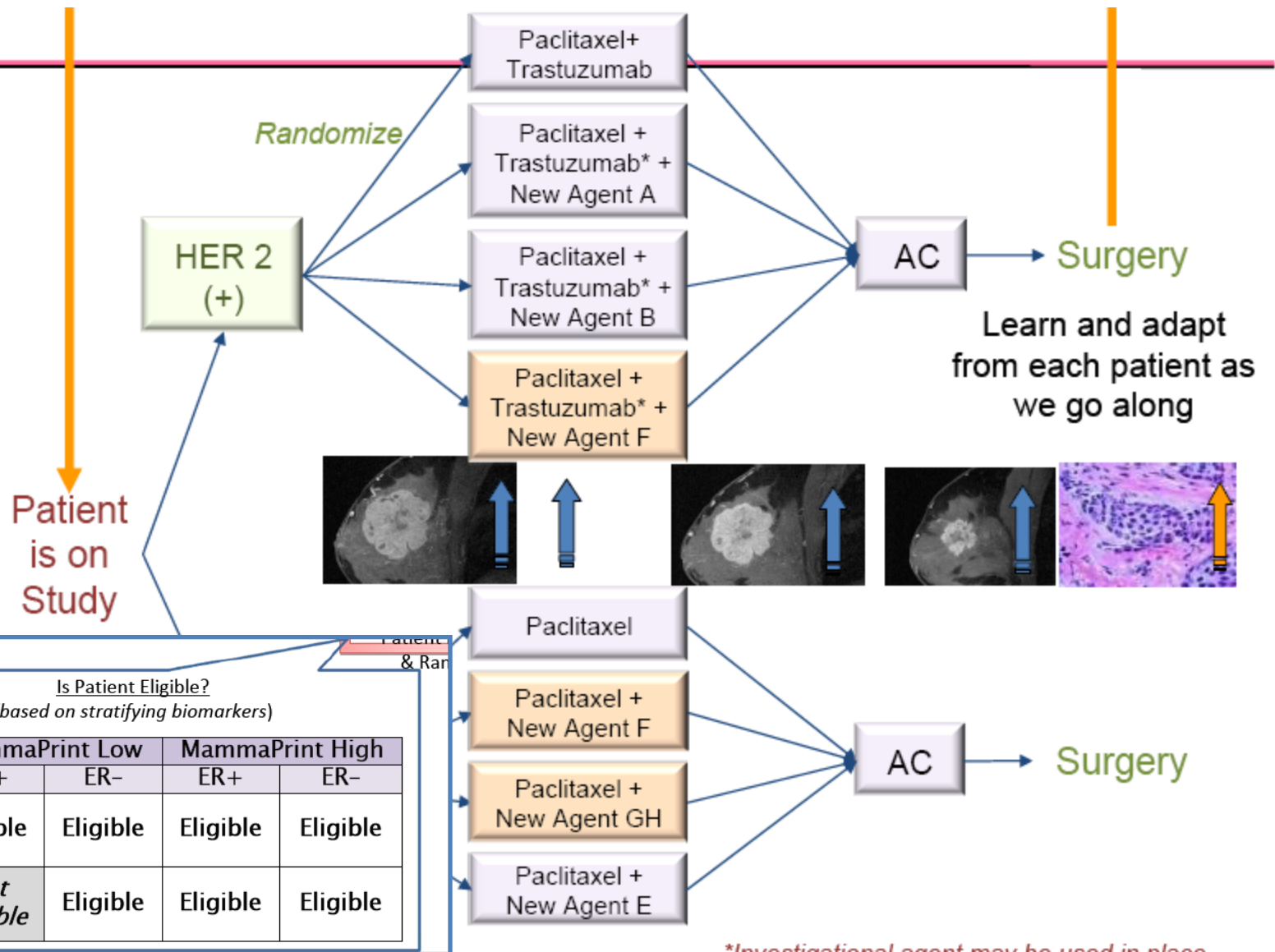


No. at Risk								
Cetuximab plus best supportive care	110	101	88	75	48	31	19	8
Best supportive care alone	105	88	65	34	23	17	12	5



Monotherapy Kras selected patients  
NEJM 2008





# Personalized treatment

## requirements

- Background knowledge on the disease biology
- Targetted drugs
- Trials to prove the efficacy of the approach
- An in depth knowledge on the biology of the individual patients tumor, baseline and over time
- Banking samples, repeat biopsies, consent

**Thank You**

